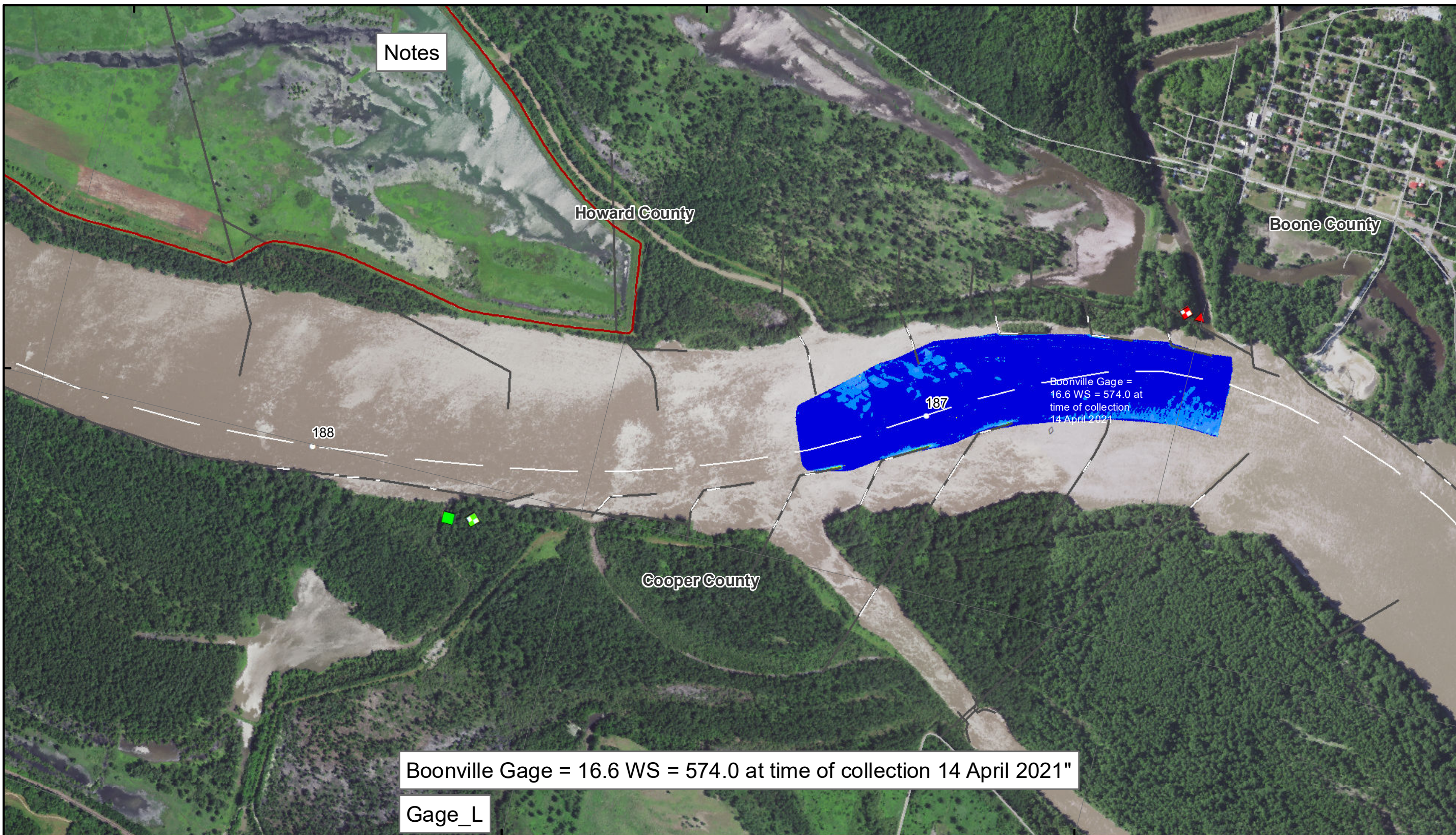


92°36'W

92°35'W

92°34'W



Notes

Howard County

Boone County

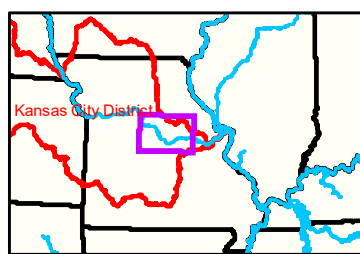
Cooper County

Boonville Gage = 16.6 WS = 574.0 at time of collection 14 April 2021"

Gage_L

38°58'N

38°58'N



92°35'W 92°34'W

LEGEND

	< 8		< 8 ft		Green Passing		Green
	8 - 9		8 - 9 ft		Red Passing		AIS Green CAN
	9 - 9.5		9 - 10 ft		Green Crossing		AIS Red NUN
	9.5 - 10		10 - 12 ft		Red Crossing		Green CAN
	10 - 12		River Mile				Red NUN
	12 - 14		Sailing Line		BSNP Structure		
	14 - 16		Levee				
	> 16						

Buoy

	Green
	Red
	Junction

Feet

0 312.5 625 937.5 1,250 2,500

NOTES:
Horizontal Coordinate System:
World Geodetic System of 1984 (WGS84), projected to the Universal Transverse Mercator (UTM) Zone 15 North.
Distance units in U.S. Survey Feet

Vertical Datum:
Soundings are shown in feet and indicated depths are referenced to water surface at time of collection.

The information depicted on this map represents the results of a survey conducted on the date indicated and can only be considered to represent the general condition existing at that time.

The location of navigation aids are based on and provided by the U.S. Coast Guard.



Disclaimer: The U.S. Army Corps of Engineers is not responsible for the accuracy of the information provided in this report. The information is provided for informational purposes only and should not be used for any other purpose. The U.S. Army Corps of Engineers makes no warranty, express or implied, for the accuracy, completeness, or timeliness of the information provided. The user assumes all liability for the use of the information provided. The U.S. Army Corps of Engineers is not responsible for any damage or loss resulting from the use of the information provided. The U.S. Army Corps of Engineers is not responsible for any damage or loss resulting from the use of the information provided.

KANSAS CITY DISTRICT MISSOURI RIVER AREA OFFICE	
Submitted By:	MRAO
Reviewed By:	MRAO
Approved By:	MRAO

Survey Information

MO_02_LMR
MO_02_LMR_20210414_CS_186_5_187_2_SORT
14 April 2021

Sheet Number
40 of 46